



STATENS
NATUR
OPPSYN

Sjunkhatten_Fridal

Period Analysed : Saturday 02 June 2012 to Monday 29 October 2012



Key Figures

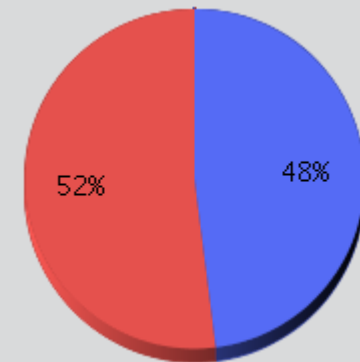
- Total Traffic for the Period Analysed : 1,641
- Daily Average : 12
- Monthly Average : 328
- Busiest Day of the Week : Saturday
- Busiest Days of the Period Analysed :
 1. Wednesday 17 October 2012 (155)
 2. Wednesday 15 August 2012 (51)
 3. Wednesday 22 August 2012 (49)
- Distribution by Direction :

52%

• Sjunkhatten_Fridal_IN :

: 48%

• Sjunkhatten_Fridal_OUT



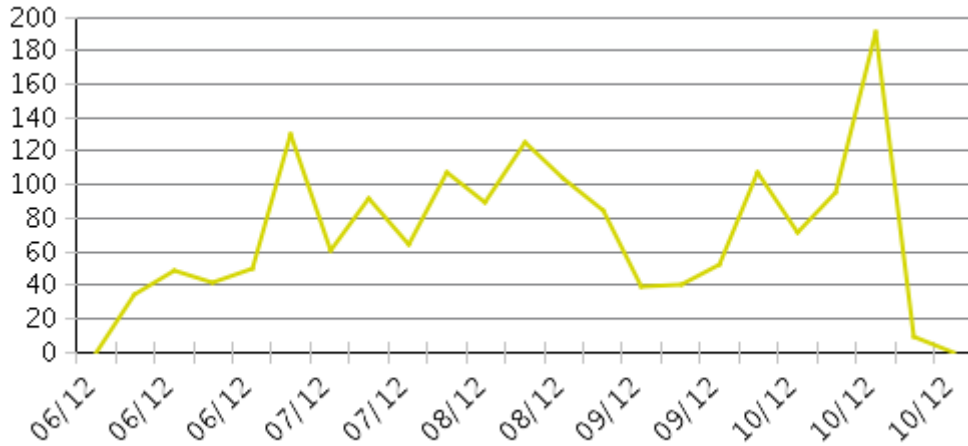


Sjunkhatten_Fridal

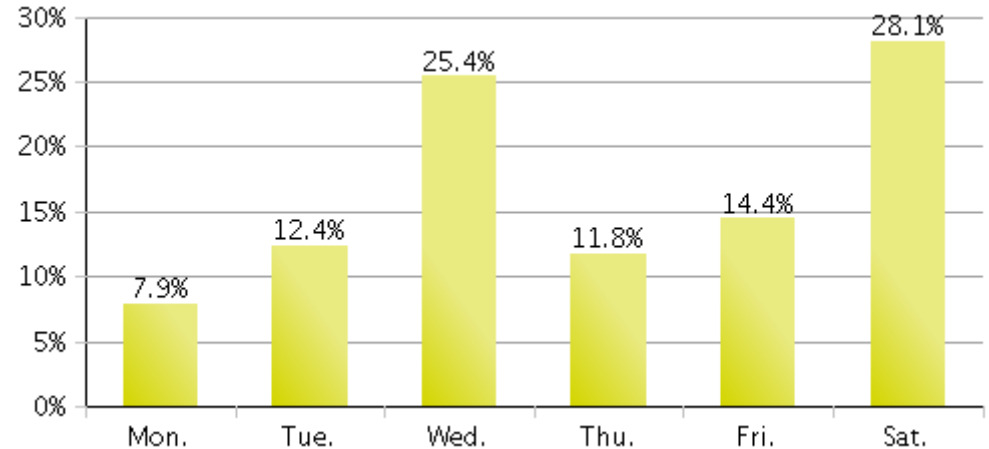
Period Analysed : Saturday 02 June 2012 to Monday 29 October 2012



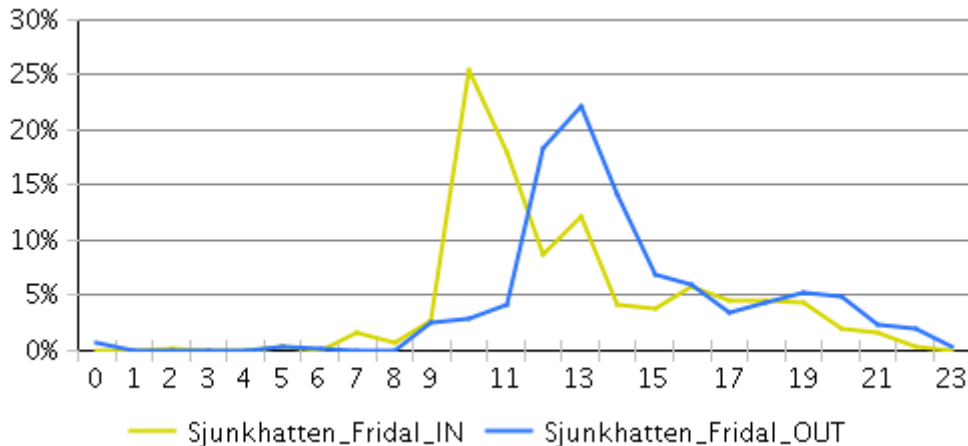
Weekly Traffic



Weekly Profile



Hourly Profile during The Weekdays



Hourly Profile during the Weekend

